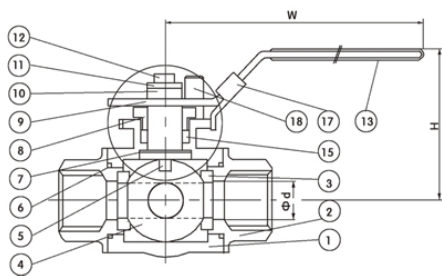
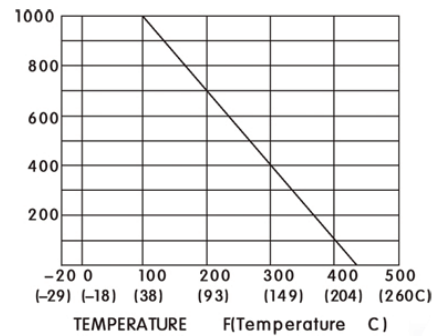
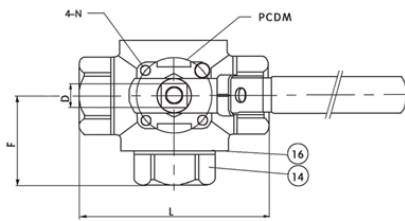
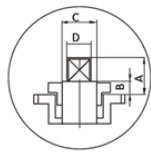


3 way Reduced port ball valve T port

ITEM	PARTS	MATERIAL	QTY
1	BODY	ASTM-A351-CF8M	1
2	END CAP	ASTM-A351-CF8M	2
3	BALL SEAT	PTFE	4
4	BALL	ASTM-A351-CF8M	1
5	STEM	A ISI316	1
6	END SEAL S	PTFE	2
7	T HRUST WASHER	PTFE	1
8	GLADN NUT	AISI304	1
9	HANDLE	AISI 304	1
10	HANDLE WAS HER	AISI 304	1
11	WASH	AISI 304	1
12	HANDL E NUT	AISI 304	1
13	PLASTIC COVER	PLASTIC	1
14	END CAP	ASTM-A351-CF8M	1
15	STEM PACKING	PTFE	2
16	END SEALS	PTFE	1
17	LOCK	A ISI 304	1
18	STOP PIN	AISI 304	1



PORT TYPE	1	2	3	4
L	1 ⊕ 2 3 3	1 ⊕ 2 3 3	1 ⊕ 2 3 3	1 ⊕ 2 3 3
T	1 ⊕ 2 3 3	1 ⊕ 2 3 3	1 ⊕ 2 3 3	1 ⊕ 2 3 3



3-weg kogelkraan T-boring gereduceerde doorlaat

	Ød	L	B	D	C	A	F
Driewegkogelkraan T-boring LD 1/4"	12,7	64	6,0	9,0	12,7	10,2	32,0
Driewegkogelkraan T-boring LD 3/8"	12,7	64	6,0	9,0	12,7	10,2	32,0
Driewegkogelkraan T-boring LD 1/2"	12,7	75	6,0	9,0	12,7	10,2	37,5
Driewegkogelkraan T-boring LD 3/4"	16,0	84	6,0	10,7	15,0	16,0	42,0
Driewegkogelkraan T-boring LD 1"	20,0	101	7,5	10,7	15,0	18,0	50,5
Driewegkogelkraan T-boring LD 1.1/4"	25,0	119	7,5	10,7	15,0	18,0	54,5
Driewegkogelkraan T-boring LD 1.1/2"	32,0	130	8,5	14,0	20,0	19,0	65,0
Driewegkogelkraan T-boring LD 2"	38,0	151	8,5	14,0	20,0	19,0	75,5

	W	H	M	N	Cv Factor	Kgf/cm
Driewegkogelkraan T-boring LD 1/4"	132	60	42	M5 x 0,8	68	7,8
Driewegkogelkraan T-boring LD 3/8"	132	60	42	M5 x 0,8	68	7,8
Driewegkogelkraan T-boring LD 1/2"	132	60	42	M5 x 0,8	68	9,5
Driewegkogelkraan T-boring LD 3/4"	155	73	50	M6 x 1	105	14,0
Driewegkogelkraan T-boring LD 1"	155	80	50	M6 x 1	196	26,0
Driewegkogelkraan T-boring LD 1.1/4"	155	85	50	M6 x 1	266	43,0
Driewegkogelkraan T-boring LD 1.1/2"	210	103	70	M8 x 1,25	363	70,0
Driewegkogelkraan T-boring LD 2"	210	110	70	M8 x 1,25	500	102,0